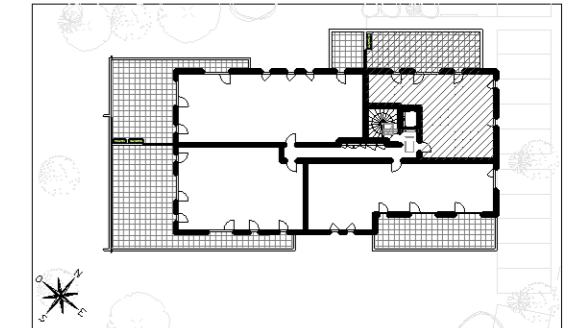


## VIF - RESISTANCE

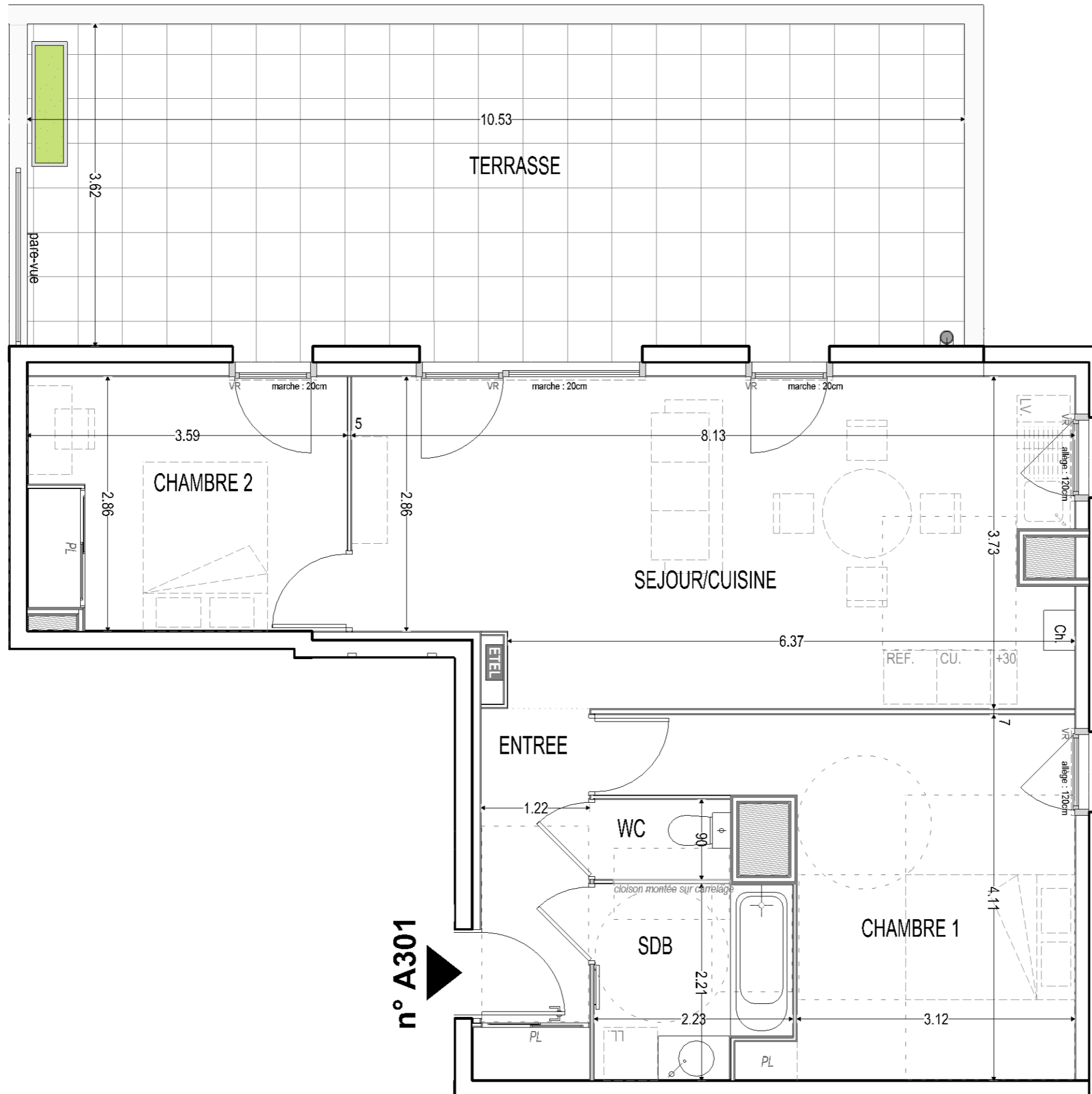
25-29 BOULEVARD DE LA RESISTANCE - 38450 - VIF






### BATIMENT A

Appartement de 3 pièces  
n° A301 au 3ème étage

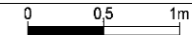
ENTREE	5,10 m²
SEJOUR/CUISINE	28,35 m²
CHAMBRE 2	10,01 m²
CHAMBRE 1	15,18 m²
SALLE DE BAIN	4,59 m²
WC	1,38 m²
<b>SURFACE TOTALE HABITABLE</b>	<b>64,61 m²</b>
TERRASSE	38,12 m²
<b>SURFACE TOTALE PRIVATIVE</b>	<b>102,73 m²</b>



### LÉGENDE

AV	ALLEGE VITREE	LV	EMPL. LAVE-VAISSELLE
VR	VOLET ROULANT	LL	EMPL. LAVE-LINGE
PL	PLACARD	CU	EMPL. BLOC CUISSON
	MOBILIER NON FOURNI	REF.	EMPL. REFRIGERATEUR
	FAUX-PLAFOND ou SOFFITE	TRI	EMPL. TRI SELECTIF
	SECHE SERVIETTE	Ch	CHAUDIERE GAZ
	ESPACE TECH. ELEC. DU LOGEMENT	+30	LINEAIRE COMPLEMENTAIRE (EXIGENCE NF HABITAT)
		+45	

Hauteur sous plafond des pièces principales sauf mention particulière : 2,50m

Echelle		18/04/2024	Indice : 1
---------	---	------------	------------